

HYBRID by DYNAMIC WORKFLOW SOLUTIONS

FLEXIBLE FUNCTIONALITY

ADAPTIVE  COMPREHENSIVE  USABLE

Hybrid is a modernized digital asset management system (DAMS) being utilized in various verticals throughout the U.S. and Canada. With extensive core features, adaptive architecture, and an intuitive user interface, **Hybrid** is a fully functional and flexible platform that solves asset management challenges. The intuitive **Hybrid** DAMS solution stores, shares, and accesses information and assets effortlessly, effectively, and securely to protect and ensure admissibility in court for years to come*.

Hybrid can be deployed in SaaS, private cloud, and/or on-premise environments (hybrid), providing scalable and secure storage solutions that meet unique business requirements for multiple verticals including law enforcement, medical applications, insurance, court systems and archiving. The customizable UI creates agency-driven interfaces and experiences for each departments' workflow requirements.

With an integration into **Data-Central Public Safety Module***, **Hybrid** lives at the heart of the operation. It supports users with intelligent workflows and simplifies the agencies' ecosystem by managing digital assets to be secure and compliant with IACP's digital evidence management standards and requirements to manage digital sources for law enforcement, security, prosecution, and court procedures.



KEY FEATURES

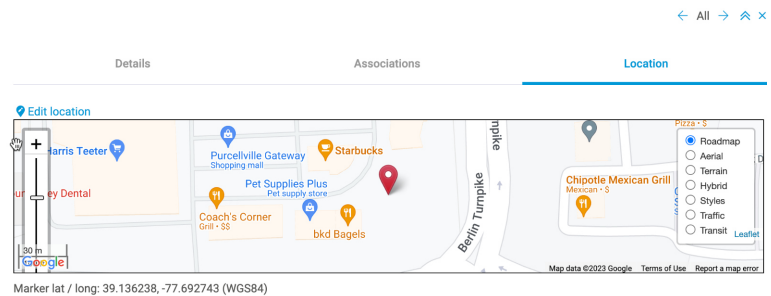
Hybrid can share files externally, to both people with or without accounts, and is managed from a single admin point. Access to uploading, viewing, and downloading assets has parameters for users and expiration dates along with a password for added security.

When managing the shared files, the user will see basic information about each share, including the information associated with the share, type, user who created it, how the share was delivered, date last changed, date last accessed, expiration date, access, and a list of tools.

Users can request evidence files be sent to a case directly from third-party sources through an email via a URL, with the Evidence Invite feature. When the user creates the request for evidence; a message, an expiration date, and a password (optional) can be used when sending the email request. The person receives an email, the message, and the URL link. They simply click on the link and are presented with a browser window to drag and drop their files into. The files will be uploaded into the case folder that was originally shared. Users can also drop in zip files and the person will be given the option to automatically extract the files in **Hybrid**. This will show the folder/file structure that was in the zip package.

Hybrid has geospatial query capabilities. **Hybrid** can automatically extract Lon./Lat. information from the file if they exist. A user can then manually drop a pin on a map to pinpoint where the evidence was found.

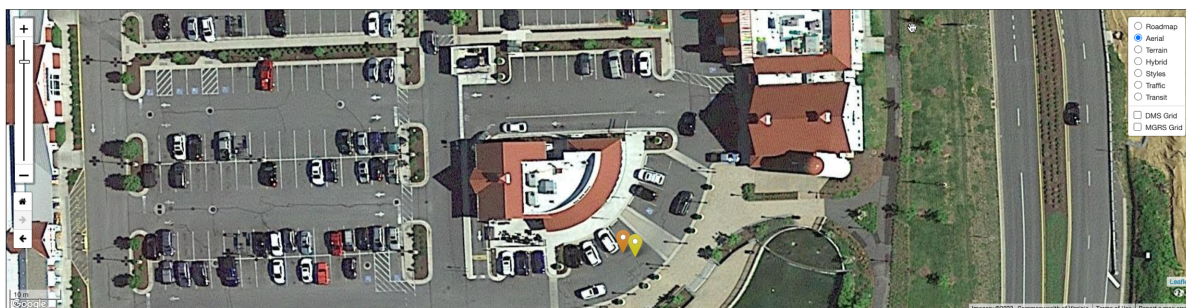
Active Current Cases > Cases > 22-12345 > Photos > Gas and Go 2958 Main St > Vehicle > 002 (1).jpg



From the Lon./Lat. information any user with the correct privileges can open a map, drill down into a specific area (city square block) and then draw a square around the area of interest. **Hybrid** will display all of the assets in that area.

Current Cases > Cases > 22-12345

277 assets



Asset Types: Photo Document Video Audio Archive

KEY FEATURES

This re-imagined DAMS is a scalable solution that grows with the organization's needs but is still very affordable for any size agency. **Hybrid** pricing has a positive economic impact by generating operational efficiencies and reducing time on task by as much as 90% over current practices. The key element to keeping costs down is a concurrent licensing model. Organizations do not have to purchase licenses for every user, but instead buy a pool of licenses that can be shared as needed. Instead of one hundred licenses, an organization can purchase ten concurrent licenses, so at \$500 per license, the cost is \$5,000 a year not \$50,000 for one hundred users.

Interoperability with category-leading technologies, and as an open platform, **Hybrid** is future-proof, delivering value for your organization today and tomorrow.

- Supports the majority of proprietary file formats, including video and audio
- Organizations can use their own Cloud-based, on-premise storage, and hybrid options using both cloud and local simultaneously
- Contemporary UX and intuitive interface
- Advanced search and previewing capabilities
- Customizable single-sign-on (SSO)
- Rights-managed asset indications
- Out of the box plug-ins and integrations

Hybrid supports third-party Artificial Intelligence processes including:

- Imaging and Tagging Features
- Label Detection
- Text Detection
- Document Text Detection
- Facial Detection
- Landmark Detection
- Transcription

***Data-Central Public Safety Service Module for Hybrid Includes:**

Authentication of Evidence Assets via SHA 256 Hash

Unique GUID for every asset, including a link between the original 1st instance file and all work products

Complete audit trail for the lifespan of each asset

Manage video conversions of proprietary video formats from **Data-Central**

Third-party interface management for ingesting content from multiple sources

Retention and security based on categories/classifications of assets

Evidence Invite Feature - send an email with a secure link requesting digital evidence files

For more information, or to schedule a demo, please email David Glover at:
dglover@dynamicworkflowsolutions.com